



电磁炉电容器 高压谐振系列

INDUCTION COOKER HIGH VOLTAGE RESONANCE SERIES

MKPH

采用耐高温聚丙烯薄膜介质，内串式双面加厚型金属化电极，无感式结构，DV/DT全检测试，全自动化生产，具有一致性好，稳定性高等特点。

专用于电磁炉等感应加热装置的高频振荡回路。

The products are made of temperature-resistant metallized polypropylene film, both side thickened metallized electrode, non-inductive construction, DV/DT full inspection testing, full automatic production. They have characteristics of good uniformity, high stability and so on.

Specifically used in high frequency vibration return circuit of induction cooker and other induction heating equipment.



引用标准 Reference standard GB/T14472、IEC60384-14、UL1283

气候类别 Climatic category 40 / 105 / 21

额定电压 Rated voltage 1000VDC、1200VDC、1600VDC、2000VDC

容量范围 Capacitance range 0.01 μ F ~ 0.9 μ F

容量偏差 Capacitance tolerance \pm 5%(J)、 \pm 10%(K)

耐电压 Voltage proof

极间 between terminals $2 \cdot U_R(\text{VDC}) / 10\text{s}$

极壳 between terminals and case $2 \cdot U_R + 1000(\text{VAC}) / 60\text{s} (\geq 2000\text{VAC})$

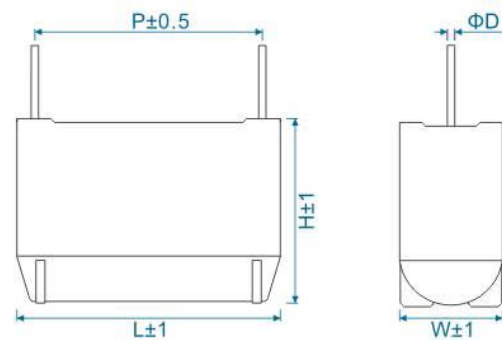
绝缘电阻 Insulation resistance(20 $^{\circ}$ C)

极间 between terminals $\geq 30000\text{S} (100\text{Vdc}, 60\text{s})$

极壳 between terminals and case $\geq 30000\text{M}\Omega (100\text{Vdc}, 60\text{s})$

损耗角正切 Tangent of loss angle(20 $^{\circ}$ C) $\leq 0.0007 (10\text{KHz})$

电压爬升率 Pulse rise time(dv/dt) 500V/ μ s Max

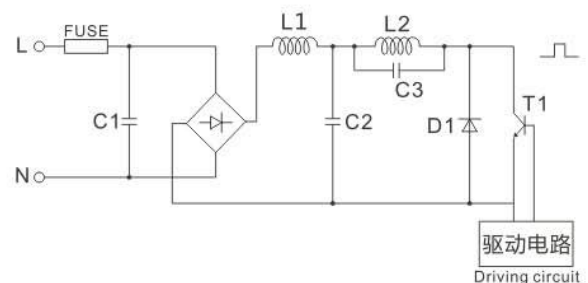


常用规格 Dimension

Unit : mm

Rated Cap.	L	W	H	P	ΦD
1000VDC					
0.10 μ F	26	12	23	22.0	1.0
0.15 μ F	35	10.5	21.5	30.5	1.0
1200VDC					
0.24 μ F	36	12.5	24	30.5	1.0
0.27 μ F	35	13	24	30.5	1.0
0.27 μ F	35	21.5	16	30.5	1.0
0.30 μ F	35	14	25	30.5	1.0
0.30 μ F	35	23	16.5	30.5	1.0
0.33 μ F	35	15	26	30.5	1.0
0.68 μ F	36	22	33	30.5	1.0
1600VDC					
0.30 μ F	36	17.5	29	30.5	1.0
0.33 μ F	36	19.5	32	30.5	1.0

典型线路图 Typical circuit



C3:谐振电容
Resonance capacitor